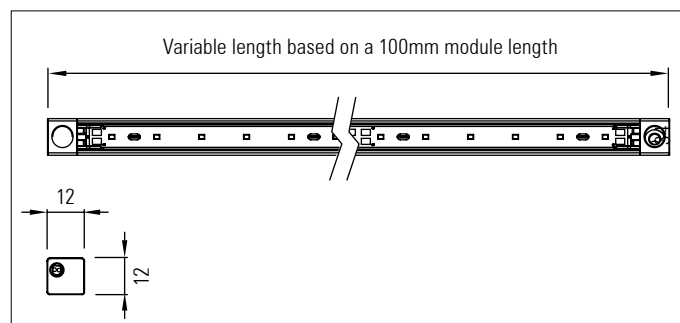
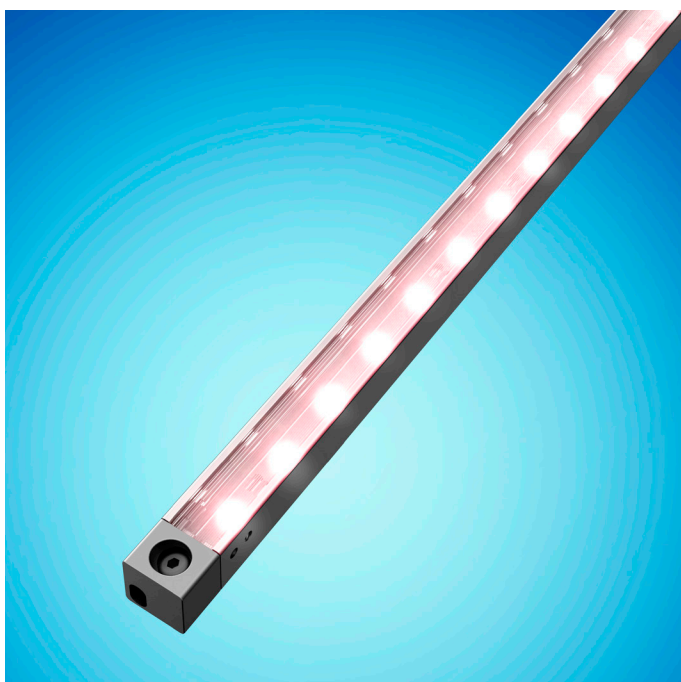


## Euclid 12 IP20

### LED linear lighting system



#### Euclid 12 IP20

LED linear lighting system

#### Product description:

For use in interior indirect cabinet lighting and undershelf lighting applications

Osram, Samsung or Luminus medium power 0.3 Watt LEDs

Up to 15 Watts per mtr

12V DC supply

Side, back and end power feed options

Dot free opal or clear window versions are available.

On board LV constant current linear driver

16 Amp IP20 connectors join strips together on-site

Dimming options available: 1-10V, DMX and DALI. Separate dimming channel

Various LED colour temperature and CRI options available

Satin black, satin white or any RAL paint colour finish

Custom lengths based on a 100 mm module up to 2.5 mtrs

Up to 1,000 Lumens per Mtr

Product Code	No. of LEDs per mtr.	IP	Length (mm)	LED Type	Optics (°)	Colour Temp. (K)	CRI	Cover	Fixing Type	Feed	Finish
EUCLID 12	60 LEDs per Mtr: 15mm pitch	20	100mm  -increments of 100mm up to- 2,500mm	0.3W LEDs:  Osram Samsung Luminus	120°	27=2,700k 30=3,000k 35=3,500k 40=4,000k 45=4,500k 50=5,000k Dynamic white	80 90	Clear Frosted Opal	Screw - fixing	End Back Side	Black White Any RAL- colour